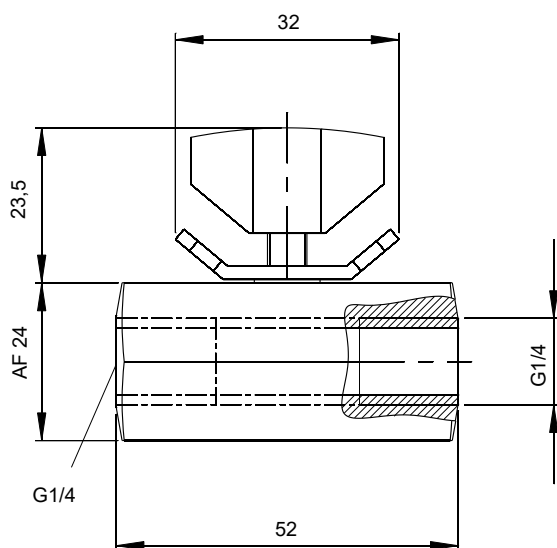


# Throttle check valves

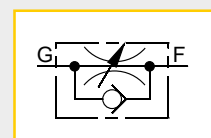
single valve for threaded pipe connection, pmax. 500 bar

**700-15**

Issue: 10/2022



**Webcode: 070015**

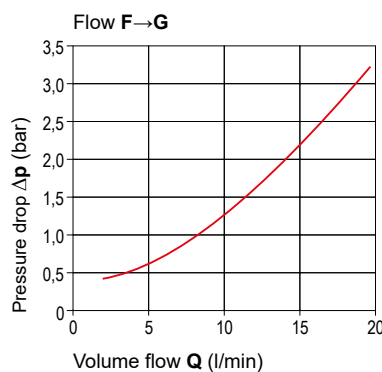
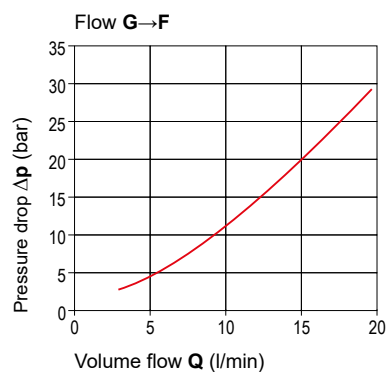


## Technical data:

Type	Throttle check valve	
Variation	Single valve for threaded pipe connection	
Adjustability	Can be adjusted manually	
Max. operating pressure (pmax.)	[bar]	500
Max. volume flow <sup>(1)</sup> (Qmax.)	[l/min]	15
Weight approx.	[kg]	0,18
<b>Order no.</b>	<b>DRV-500-5-001</b>	

<sup>(1)</sup>Value applies to a fully opened valve and a resistance to flow of approx. 50 bar in throttled direction.

$\Delta p$ -Q-nominal lines (guide values) for kinematic oil viscosity during the measurements  $36 \times 10^{-6} \text{ m}^2/\text{s}$ ., throttle fully opened.



## Description:

The throttle check valve belongs to the flow control valves. The throttle check valve is used with single- and double-acting consumers. Herewith, it affects the volume flow.

- Throttled flow from G→F
- Free flow from Flow F→G

## Advantages:

- ✘ Easy adjustable by hand throttle
- ✘ Easy installation by threaded connections
- ✘ Installation without additional fastening materials possible
- ✘ Suitable for single-acting and double-acting consumers

We also design and manufacture customized variants!



**HYDROKOMP®**

Hydraulische Komponenten GmbH

+49 6401 225999-0

sales@hydrokomp.de

Siemenstr. 16  
35325 Mücke (Germany)

www.hydrokomp.de