

Connecting inserts

nominal diameters 3 / 5 / 8 / 10 / 12 / 16 / 20, pmax. 500 bar

600-2

Issue: 10/2022

Description:

The connecting inserts are mounted into the standardized bores on both sides. The round wire snap ring prevents the sleeve from shifting, if professionally mounted. Various nominal diameters are available.

The disconnecting force has to be considered when dimensioning the connecting bolts.

In order to provide a wide range of application, all sealings are made of FKM and the housing is made of stainless steel.

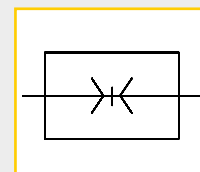
Application:

Connecting inserts are used, when two construction units on short distance shall be connected without standard screw connections.

Connecting inserts are especially designed for hydraulic oil-channel connections without pipe or screw connection.

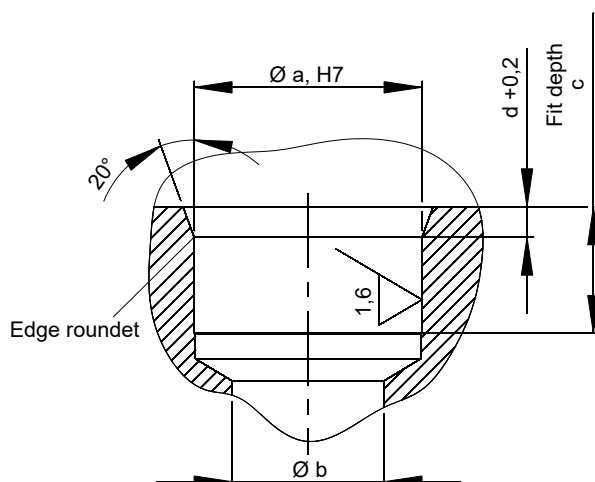


Webcode: 060002

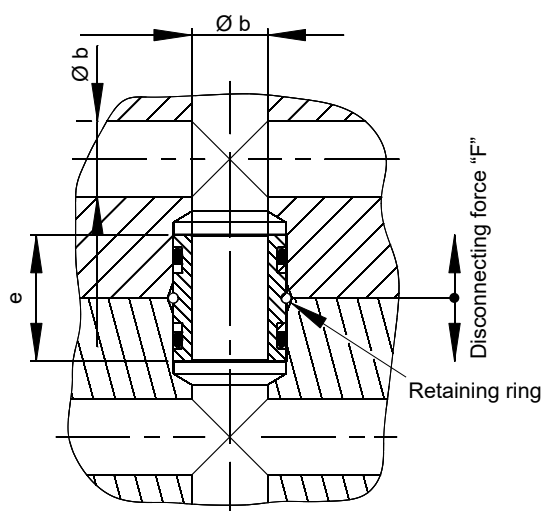


Operating conditions:

- ☒ Max. operating pressure: 500 bar
- ☒ Nominal diameters: (see table)
- ☒ Max. operating temperature: 150° C
- ☒ Sealing material: FKM
- ☒ Housing material: stainless steel



Application example:



Nominal diameter:	ND 3	ND 5	ND 8	ND 10	ND 12	ND 16	ND 20
Ø a	[mm] 8	10	14	16	18	22	28
Ø b	[mm] 3	5	8	10	12	16	20
c min.	[mm] 6	7	8	10	10	11	13
d	[mm] 1,5	1,5	1,5	2,4	2,4	3,2	3,2
e	[mm] 12	14	16	20	20	22	26
Disconnecting force F	[N] =4,3xp ⁽¹⁾	=5,9xp ⁽¹⁾	=10,4xp ⁽¹⁾	=12,3xp ⁽¹⁾	=14,2xp ⁽¹⁾	=17,9xp ⁽¹⁾	=30,1xp ⁽¹⁾
Order no.:	SV-500-... 03-001	05-001	08-001	10-001	12-001	16-001	20-001

⁽¹⁾ [bar]

We also design and manufacture customized variants!



HYDROKOMP®

Hydraulische Komponenten GmbH



+49 6401 225999-0



sales@hydrokomp.de



Siemenstr. 16
35325 Mücke (Germany)



www.hydrokomp.de

Technology that connects